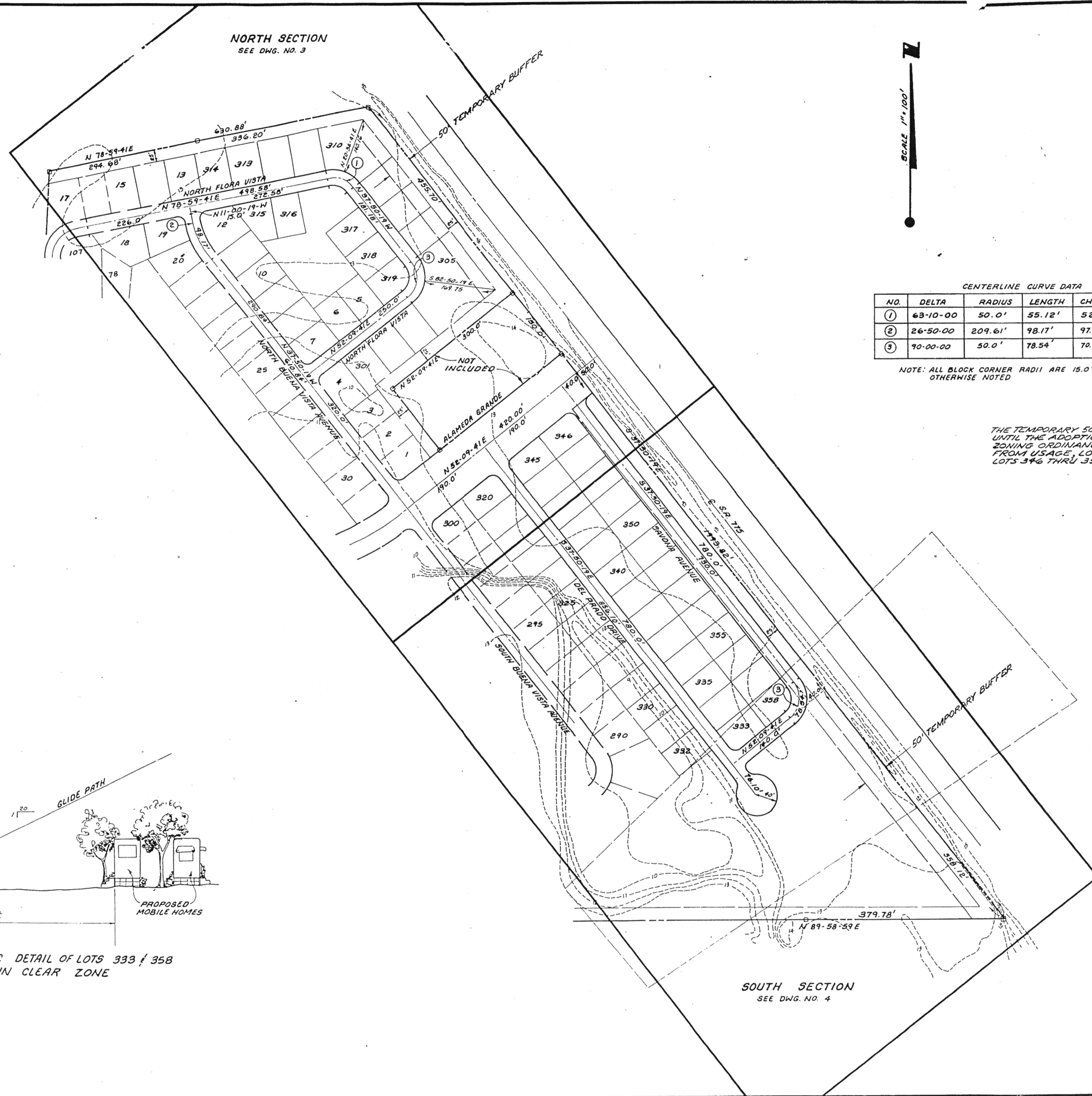


ALAMEDA ISLES
MOBILE HOME ESTATES

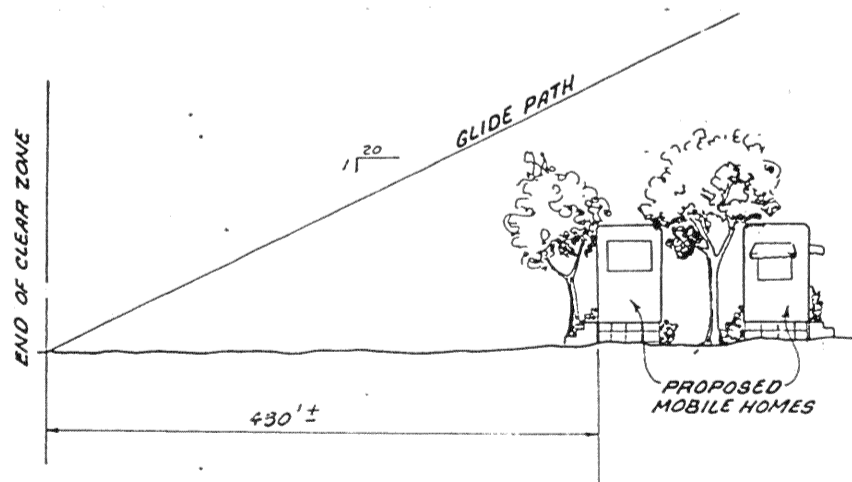


CENTERLINE CURVE DATA

NO.	DELTA	RADIUS	LENGTH	CHORD	TANGENT
①	63-10-00	50.0'	55.12'	52.37'	30.74'
②	26-50-00	209.61'	98.17'	97.27'	50.0'
③	90-00-00	50.0'	78.54'	70.71'	50.0'

NOTE: ALL BLOCK CORNER RADII ARE 15.0' UNLESS OTHERWISE NOTED

THE TEMPORARY 50' BUFFER IS IN EFFECT UNTIL THE ADOPTION OF THE PROPOSED ZONING ORDINANCE. THIS EXCLUDES FROM USAGE, LOTS 305 THRU 309 AND LOTS 346 THRU 358 UNTIL SAID ADOPTION.



SCHEMATIC DETAIL OF LOTS 333 & 358
IN CLEAR ZONE

SOUTH SECTION
SEE DWG. NO. 4

DESIGNED BY	L.D.L.	APPROVED BY	
DATE	APRIL, 1975	PROJECT NO.	1574-12
CHECKED BY	R.C.	DRAWN BY	
SCALE	1" = 100'	BY	
L.T.R.		REVISION	
FOR: KROH BROTHERS DEVELOPMENT COMPANY, ENGLEWOOD, FLA.			
CENTERLINE ALIGNMENT			
INDEX TO PLOT PLANS			
ALAMEDA ISLES MOBILE HOME ESTATES EXTENSION			
SMALLY, WELLFORD & NALVEN - CONSULTING ENGINEERS - SARASOTA, FLA.			
DRAWING NUMBER	2		
REVISION			